

Uniquely San Diego

Perfection in the heart of historic Balboa Park

*Catered Events for 20
to 20,000 Guests*

"One of America's Best Restaurants"
—Gourmet Magazine

Award Winning Executive Chef Jonathan Hale

Balboa Park's only full service catering kitchen

On-site catering sales team

The Prado at Balboa Park is locally owned and operated by the Cohn Restaurant Group. The Cohn Restaurant Group includes San Diego's award winning Blue Point Coastal Cuisine, Corvette Diner, Indigo Grill, Island Prime and C-Level, 333 Pacific, Analog, Bo-beau Kitchen + Bar, Gaslamp Strip Club, La Jolla Strip Club, Vintana, 100 Wines Hillcrest and Pineapple Grill & 100 Wines in Maui.

The Prado is located in the House of Hospitality, in the heart of San Diego's world famous Balboa Park.



1549 El Prado, Suite 12, San Diego, CA 92101
in the Historic House of Hospitality
619.557.9441
dinecrg.com pradoevents.com





THE PRADO AT BALBOA PARK *Weddings & Events*

CONFIRMATION OF SPACE AND SETTLEMENT

Reservations are considered definite upon receipt of the signed contract and initial non-refundable deposit. A second non-refundable deposit equivalent to 50% of the estimated total may be requested and will be due as indicated on the contract. The remaining estimated total cost of the event will be due three (3) business days prior to the event in the form of cash, certified check, bank check or approved credit card.



FOOD AND BEVERAGE MINIMUM EXPENDITURES

The Prado offers spectacular and unique venues. Your Catering Sales Manager will assist you in selecting the perfect location for your event based upon your expected guest attendance and event details. Food and beverage minimum expenditures will vary according to the specific venue and event time. All food and beverage will be provided by The Prado. For menus that offer more than one entrée, the highest priced menu entrée will prevail as the per person price for all guests in attendance. Buffets require a minimum of 50 guests or a labor fee will be applied. Buffets and reception stations are presented for a maximum of 2 hours.

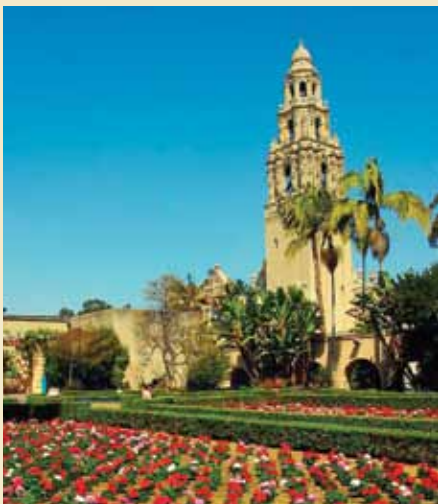


SERVICE CHARGE AND SALES TAX

All food, beverage and rental prices are subject to a taxable 21% service charge and applicable sales tax. Please note that the 21% service charge is taxable based on California State Regulation 1603(f). Service charge fees and sales tax are subject to change.

CONFIRMATION OF ATTENDANCE

Confirmation of all meal functions, as to the number of guests to be served, is the sole responsibility of the Engager. The guarantee must be received by noon, four (4) business days prior to the event date. For Sunday and Monday events, the guarantee is due on Wednesday. Once the guarantee is received, it may be increased up to 24 hours, but cannot be decreased. All charges will be based upon the guarantee, or the actual number of guests served, if greater than the guarantee.



GUEST PARKING

With over 3,000 parking spaces, all parking areas in Balboa Park are available for guest parking at no cost. Valet services can be arranged for your evening event. Please contact your Catering Sales Manager for details.



1549 El Prado • 619.557.9441 • dinecrg.com • pradoevents.com



event sites

GRAND BALLROOM

This elegant and unique ballroom features beautiful hardwood floors, a 27-foot high hand-stenciled ceiling, custom lacy chandeliers, skylights, a fully equipped theatrical stage and a bride's dressing room. Located adjacent to the Courtyard, the 5500 square foot ballroom can seat up to 320 guests.



LOGGIA

Overlooking Balboa Park's Plaza de Panama, this charming second floor room accommodates up to 100 guests. Vaulted ceilings with colorfully stenciled beams, Spanish floor tile and French doors, which open onto the two adjoining rooftop terraces, add to the ambiance.



ALHAMBRA

Located on the second floor, this attractive room comfortably seats up to 80 guests. Carpeted floor, an open-beam ceiling and French doors that open to a private covered outdoor balcony overlooking the beautiful Casa del Rey Moro Gardens create a contemporary atmosphere.



FOUNTAIN COURTYARD

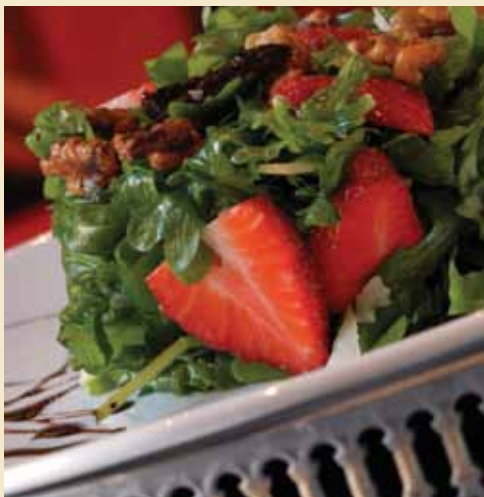
As the pre-function space to the Grand Ballroom, this traditional, Spanish Colonial courtyard offers a lush garden setting for a cocktail reception prior to an event in the Grand Ballroom. The famous Donal Hord sculpture, "Woman of Tehuantepec," sits as the centerpiece of the Courtyard.

<i>Room</i>	Size	Square Feet	Ceiling Height	Reception	Theater	Classroom	Seated w/ dance	Seated no dance
Grand Ballroom	76' x 77'	5500	22'	500	320	200	320	380
Fountain Courtyard	n/a	n/a	n/a	300	n/a	n/a	n/a	n/a
Loggia	32' x 50'	1600	14'	140	90	60	80	100
Loggia S.Terrace	16' x 37'	592	n/a	40	n/a	n/a	n/a	n/a
Loggia N.Terrace	16' x 40'	640	n/a	40	n/a	n/a	n/a	n/a
Alhambra	22' x 47'	1042	12'	120	80	56	60	80
Alhambra Terrace	10' x 63'	594	n/a	60	n/a	n/a	n/a	n/a
Garden Terrace	95' x 40'	3800	n/a	250	320	n/a	n/a	120

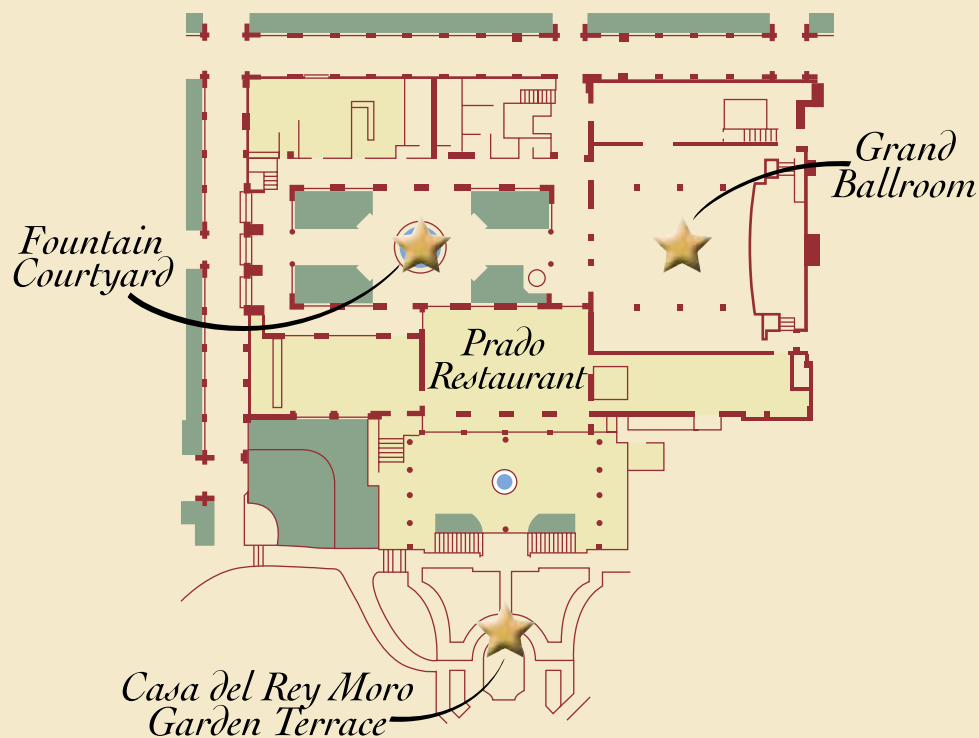


The Prado at Balboa Park is a National Historic Landmark which was originally built for the 1915-16 Panama-California Exposition. This two year festival was held in Balboa Park to promote San Diego and to celebrate the 1914 opening of the Panama Canal. The House of Hospitality recently reopened after complete reconstruction and modernization. The 3-year renovation restored the building's architecture, artwork, sculptures, alcoves, gardens and fountains. Every effort was made to historically renovate the House of Hospitality in keeping with its original Spanish, Moorish and Mexican architectural design. This is evident in over two dozen, original, hand-painted, wooden stencil designs on doors as well as the intricate hand stenciled ceilings and beams. The Donal Hord sculpture, "Women of Tehuantepec" still remains in the building's restored central courtyard.

The renovated House of Hospitality features lush historical gardens and courtyard, elegant banquet rooms, romantic terraces and the outdoor grandeur of the historic Casa Del Rey Moro Gardens. The Prado at Balboa Park offers more than 22,000 square feet of indoor and outdoor banquet spaces and can accommodate groups of 20-20,000 guests.



first floor



second floor

